










# Cutting Edge Selections

**Score Slitter Knives** require different cutting edges for different materials. The right cutting edge assures cleaner slitting faster, at lower cost. The diagrams below present general recommendations developed through our many years of experience in the design and manufacture of slitting knives. Our specialists will be happy to recommend the cutting edge best suited to your requirements.

<b>"A" Edge</b>  .002 to .004 Radius	<b>"B" Edge</b>  .006 to .008 Radius	<b>"C" Edge</b>  .010 to .012 Radius	<b>A</b>  <b>30° Included angle</b> Cellophane • Board Pressure • Sensitive Tape • Cork - Linoleum • Acetate	<b>B</b>  <b>30° Included angle</b> Paper back foil • Waxed paper • Rubber • Plastic (over .01) • Surgical Adhesive • Pulp	<b>C</b>  <b>45° Included angle</b> Waxed Paper • Impregnated Paper
<b>KNIFE-EDGES:</b> Regardless of the material being slit, score-cut knives should have rounded edges. Experience may show that other combinations of included angles and edge radii may give more satisfactory results on particular materials. These illustrations, however, should be used as a guide. The cross-sections show the mean radius of each class of edge magnified approx. 60 times.			<b>B</b>  <b>60° Included angle</b> Gauze • Textiles • Non-woven	<b>C</b>  <b>60° Included angle</b> Sandpaper • Abrasive Fabrics	<b>B</b>  <b>45° included angle</b> Glassine • Plastic (to .01) • Tissue • Newsprint • Light Paper • Crepe Paper • Kraft Paper • Mica Tape • Masking Tape

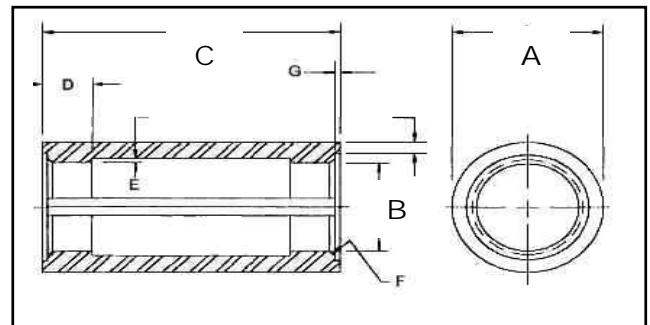
## Score/Crush Cutting Sleeves

Dusenbury	Diameter A	Diameter B	Diameter C	Keyway T
272001 272002 272003 272004	4.002"/ 4.003	3.002"/ 3.0025	8" 9 10 11	2/3" x 3/16" (W x d) For all sleeves
272005 272006 272007 272009	6.252"/ 6.253	5.003"/ 5.0035"	8 9 10 11	
			12 13 14 15 16	
			12 13 14 15 16	
272010 272011	9.312"/ 9.313	8.2530"/ 8.2535	10 11 12	None

CK-1 Slitting Roll Sleeves are made from high carbon, chrome alloy steel, which hardens completely through the sections normally required for this service.

63-64 RC hardness is guaranteed. Repeated grinding will not expose soft areas, as is the case on sleeves that have been carbonized or case hardened.

The bores and OD's of these sleeves are concentric within .001 total indicator reading. The ends are ground square with the axis.



**HOW TO ORDER:** Specify dimensions A, B, C, and T. Special sizes quoted upon request.

## Complete Shaft/Sleeve Assemblies & Dovetail Bars Fabricated



**Hamilton Industrial Knife & Machine, Inc.,**  
 240 North "B" Street, Hamilton, OH 45013  
 Phone: 513-863-1221 Fax: 513-863-1813



**Carolina Knife Co.,**  
 224 Mulvaney Street, Asheville, NC 28803  
 Phone: 828-253-6796 Fax: 828-258-0693