



# ***Circular Knife Maintenance Process***

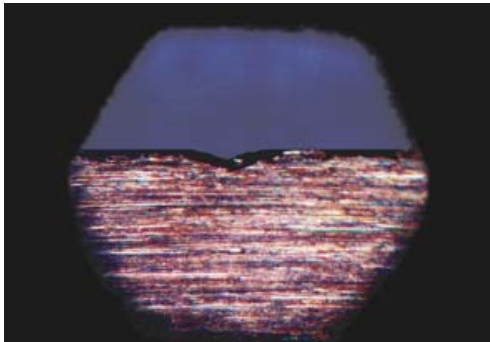
## **CAROLINA KNIFE COMPANY'S MAINTENANCE PROCESS PROVIDES THE FOLLOWING:**

1. Upon arrival in our plant, blades are inspected for wear or defects.
2. Blades are then cleaned, sorted, and re-ground to an **"Ultra-Finished"** edge. Only a minimum amount of stock is removed to restore edge quality and prolong blade life.
3. Inspection records are maintained to assist customer's determination of realistic and timely blade replacement cycles.
4. Blades not meeting predetermined process standards will be returned to the customer or disposed of in accordance with customer approval.
5. Processed blades are coated with cushioning compound and packed in sturdy, reusable shipping containers.
6. Blades are **"turned-around"** within 2 to 5 working days. Special scheduling for emergency service is available.

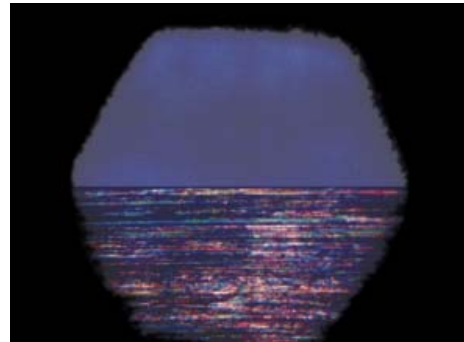
**The pictures below are steel dish slitters at 20X**

**"ULTRA-FINISH"**

ON STEEL ARE 4 - 6 MICRO INCHES



The above knife had a **.015 Wide Nick Pattern** and **Fatigue Metal Line** after its normal converting production run.



After our Resharpening Process **Nicks** and **Fatigue Metal Line** are removed and cutting edge is **"Ultra-Finished"**.

**KNIFE SHARPENING IS OUR SPECIALTY  
NOT A SIDELINE**

**1-800-520-5030 <http://www.cknife.com/>**



Hamilton Industrial Knife & Machine, Inc.,  
240 North "B" Street, Hamilton, OH 45013  
Phone: 513-863-1221 Fax: 513-863-1813



Carolina Knife Co.,  
224 Mulvaney Street, Asheville, NC 28803  
Phone: 828-253-6796 Fax: 828-258-0693